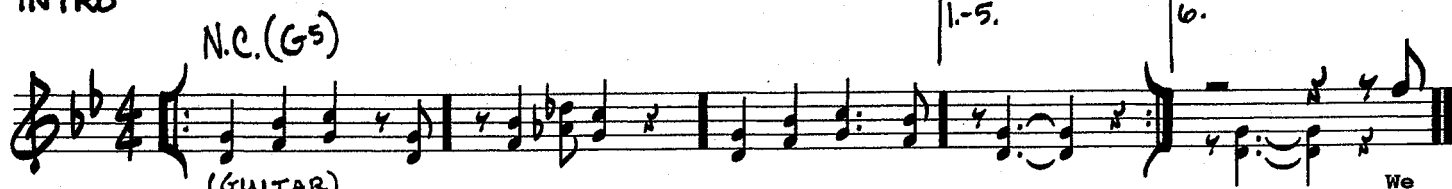


(MED.)

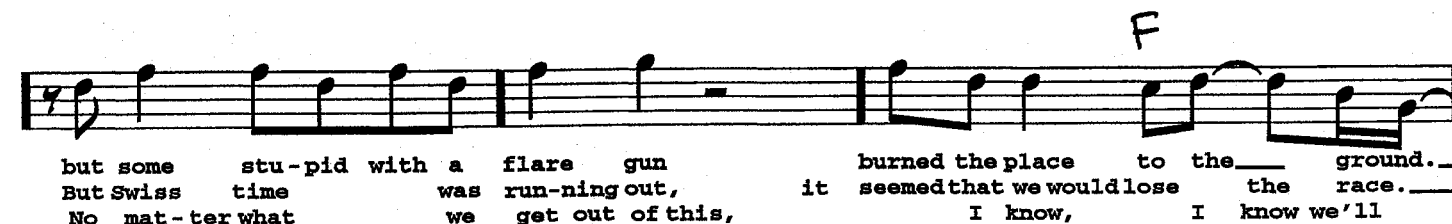
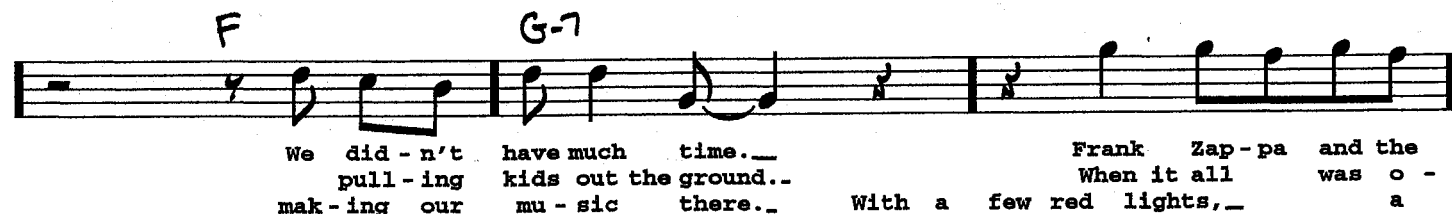
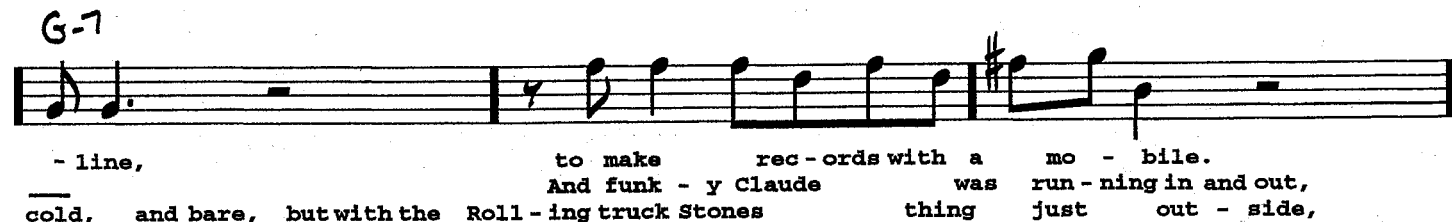
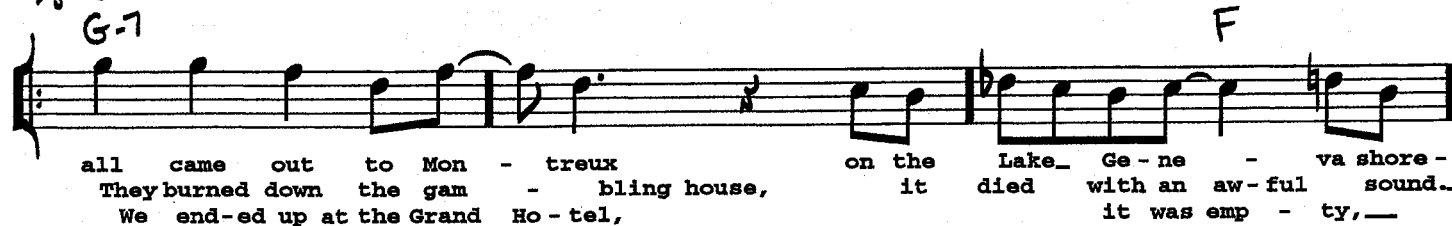
SMOKE ON THE WATER

- RITCHIE BLACKMORE/IAN GILLAN/ROGER GLOVER/JON LORD/IAN PAICE

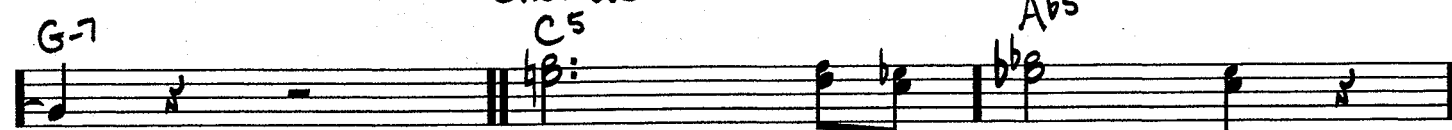
INTRO



VERSE



CHORUS



Smoke on the wa - ter,

nev - er for - get. }

G⁵ C⁵ A^{b5}

a fire in the sky. Smoke on the wa - ter.

INTERLUDE

N.C. (G⁵)

(GTR.)

GUITAR SOLO

G-7 C- G-7

PLAY 4x

C⁵ F⁵

N.C. (G⁵)

D.S. AL Φ

Φ INTERLUDE

N.C. (G⁵)

PLAY 4x

OUTRO

REPEAT AND FADE

N.C. (G⁵)